



Milton Abbey Equestrian Arena

Equine Management is increasing in popularity as one of our key vocational courses. To support equine activities, as part of our ambitious plans for a new Centre for Countryside and Equine Management, we are planning a number of important affiliated projects with a focus on Countryside Pursuits. These include a new Equestrian Arena, which will act as a catalyst for elevating equestrian activities at Milton Abbey to a new level. This will also help to strengthen our existing links, and forge new and exciting partnerships with a broad range of sectors within the equine industry for the benefit of current and future pupils, as well as the wider community.



Driven by Demand

All Milton Abbey pupils are welcome to bring their ponies or horses to School on an assisted livery basis, particularly those in the Sixth Form who are studying the Level 3 BTEC Diploma in Equine Management. Pupils manage the day-to-day care of their horses, with assistance from staff where required, and can use some of their weekly sports and activities sessions to ride. The School has its own cross country schooling area and an all-weather canter track; riding lessons are currently given in a nearby arena.

Pupils are encouraged to participate in a variety of equine activities including local unaffiliated and national affiliated events, as well as interschool competitions. Several of our pupils also ride out with locally-based trainers, gaining valuable experience in handling racehorses. Polo has been a popular activity, with pupils able to attend lessons at Druids Lodge Polo Club and play matches against other schools and universities. Milton Abbey also hosts an annual meeting of the Portman hunt, providing pupils and parents with an opportunity to follow the local hounds.

Expanding our Equestrian Provision

We have achieved great success to date in our Equine Management courses and we are proud of the excellent standard of academic knowledge, practical skill and ability to study, work, ride and compete to the high level that our pupils achieve. The growth in popularity and the wider recognition of our strength in these fields is a testament to this success. However, we recognise that this brings with it an exciting challenge for the School with increasing numbers of pupils putting further pressure on resources that are already under considerable strain.

Space for horses to be trained and worked in is limited and although we offer stabling facilities for the livery of horses on site, pupils currently need to travel off site to access an arena. In order to continue to build on our success in delivering valuable vocational equine courses, and to ensure our

pupils are able to gain the full benefit of keeping their horses at the School, we are exploring the opportunity to develop our facilities and provide a new Equestrian Arena. This project will ensure that more pupils can be accepted onto the Equine Management course offered and also that pupils can exercise their horses and have access to lessons within a safe environment on site.

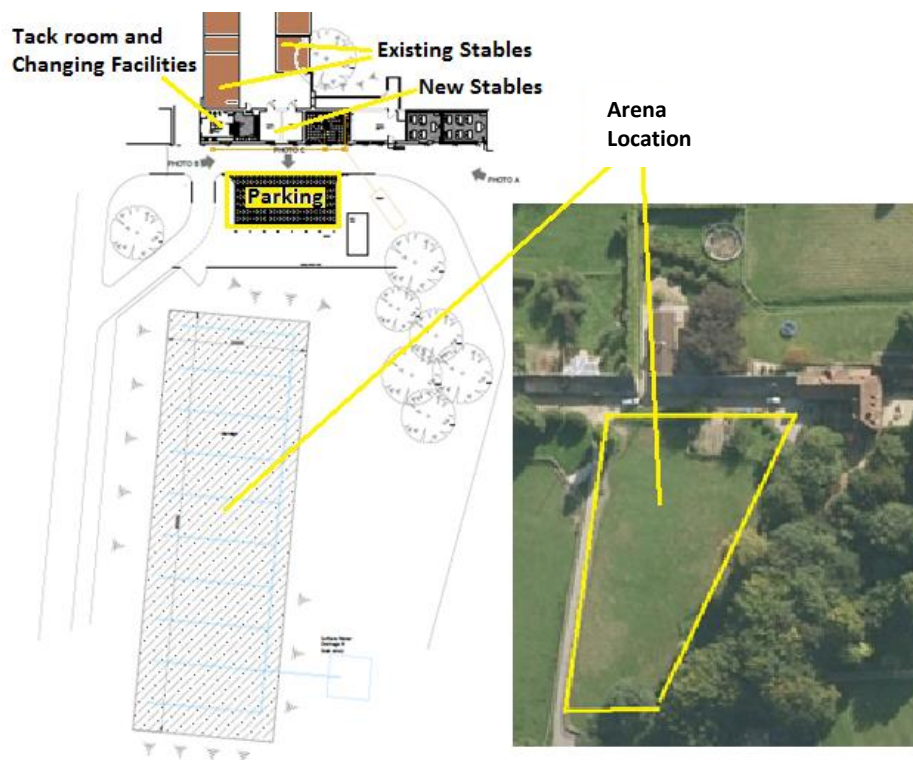
The Project Cost

The total cost of this project is **£45,000**. We have already received generous support of £12,500, which means we are seeking further support of **£32,500** to enable the work to begin.

Proposed Equestrian Arena

The plan below illustrates the proposed location and layout of the new arena, which will measure 20m x 50m and will be located in the field opposite the stable block. The arena and stable block will be serviced by the parking area also highlighted below.

Location of facilities



Transforming the Future of Equestrian activities at Milton Abbey

The new Equestrian Arena will make a significant contribution to the countryside activities at Milton Abbey for the benefit of pupils and the wider community, and we would welcome your support. We look forward to discussing the possibilities with you.

If you would like further information on the Equestrian Arena please contact the Development Manager, Lindsey Kelly, on 01258 882234 or email development@miltonabbey.co.uk